

A JOURNAL OF INDIAN ARCHITECTURE VOL XXIV NO 12 DECEMBER 2007 RS 125

ARCHITECTURE + DESIGN



★ **MARIO BOTTA**

communicating emotions through architecture

★ **ACADEMIC TRAIL**

★ **ARCHITECTURE FOR RECREATION**

⊕ *Recreational Architecture*



1. View of a courtyard set against the mountainous landscape; 2. The entrance foyer; 3. The central *chowk* of the complex
4. Symposium court with its stepped courtyard forming interactive spaces



Uttarakhand Rural *Shilp* Emporium is located along Sahastradhara Road in Dehradun with Mussorie on Shivalik ranges as the backdrop. The concept for the complex was to retain a village environment depicting the traditional rural settlement spatially. This *Shilp* Gram facilitates training programs for the local folk/villagers converging as 'self help groups' or individual 'swa-rojgaris' for overall economic growth through generation of self-employment.

The planning, therefore, has a 'prime pedestrian spine' interconnected with courtyards, which are defined by various 'activity zones'. These 'activity zones' are broadly categorised as the 'shilp court' which is the marketing area, the 'symposium court' with its stepped courtyard forming interactive spaces during training sessions, the 'display court' with low platforms as informal spaces for open display of artefacts as a *haat*, the 'village court' for the artisans to stay, and the 'central chowk' which is the culmination of movement from all courts extending into the 'food court'. Within this network of courts, the area between various zones becomes spaces for extended activities. The interweaving of the courts and the pedestrian spine dissolves the notions of boundaries and



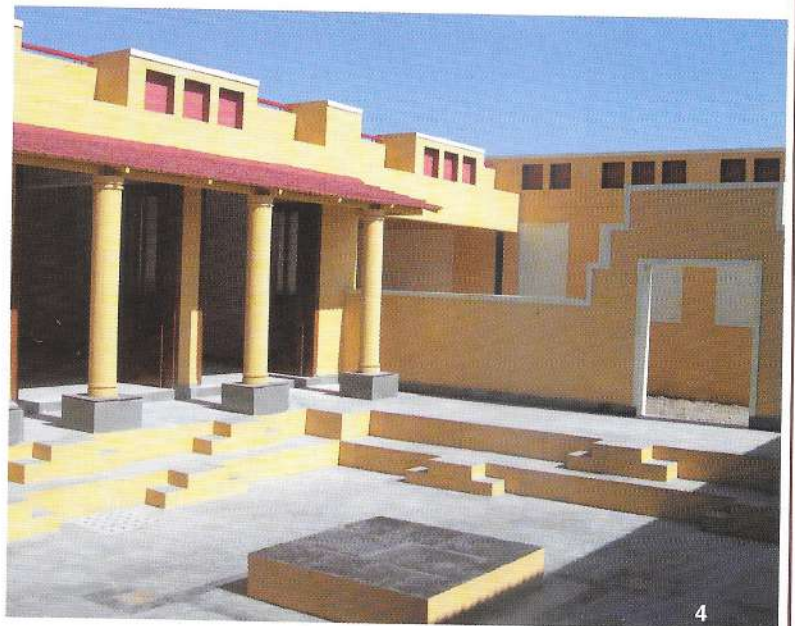
Interconnecting Zones

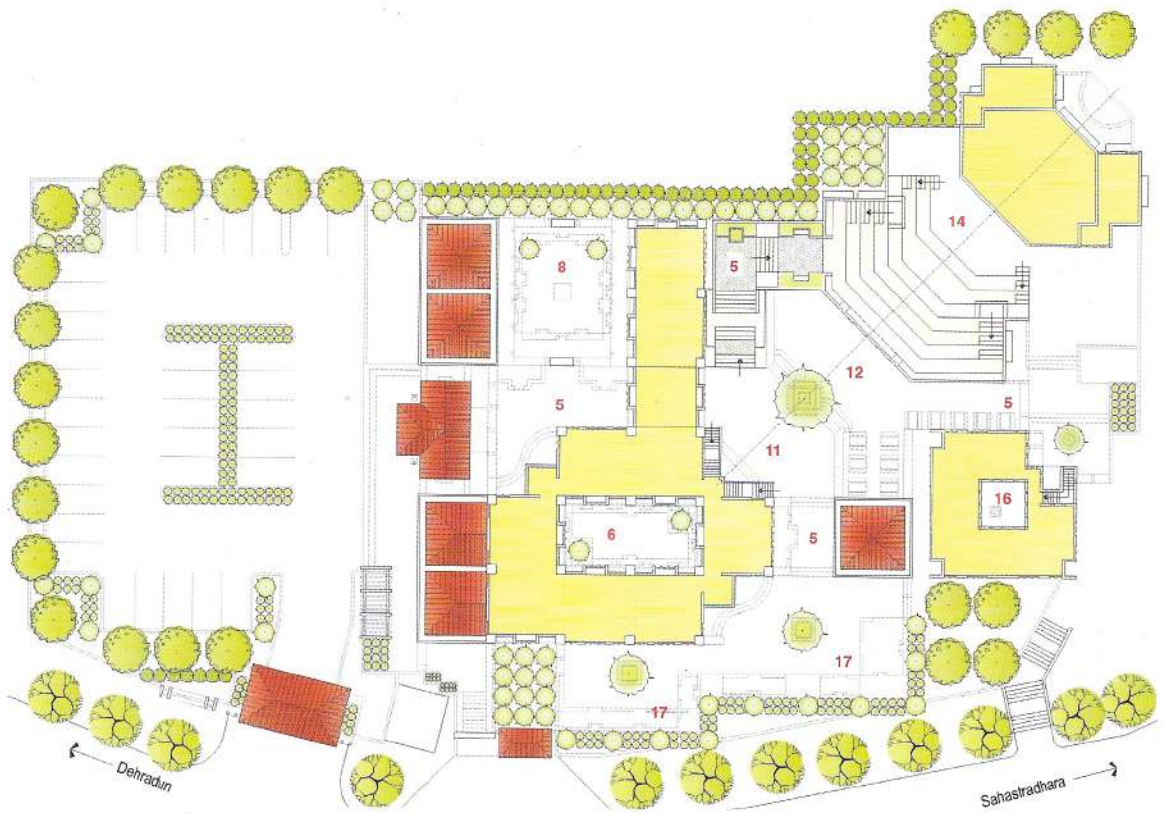
Uttarakhand Rural Shilp Emporium, Dehradun

Architects: **HK Consultants Architects & Engineers**, New Delhi

division. The interiors flow into the exterior harmonising the participation of the built form with its surroundings infused with abundance of natural light, colours and traditional arts.

The buildings have been designed on a square modular grid of 6m x 6m with the built form arranged together as contained spaces to meet the functional requirements. A square module is used as a structural system for pyramidal roof form in the building complex aesthetically responding to surrounding mountainous views. The same modular sequence is organised to give open spaces in between the blocks as open-to-sky activity courts surrounded by verandahs, which have been extensively designed as 'habitable' spaces. The courts themselves step down and become natural assembly/display spaces similar to a village square. By negating the covered link, the atmosphere becomes like a group of village huts that are connected with one another by the village street (Prime Pedestrian Spine) terminating into a central *chowk*. This 'spine' also becomes a strong link between the 'activity zones' and helps generate a cohesive building complex. This in turn has helped in cutting down the built-up area and hence saving considerable cost as per the project requirements.

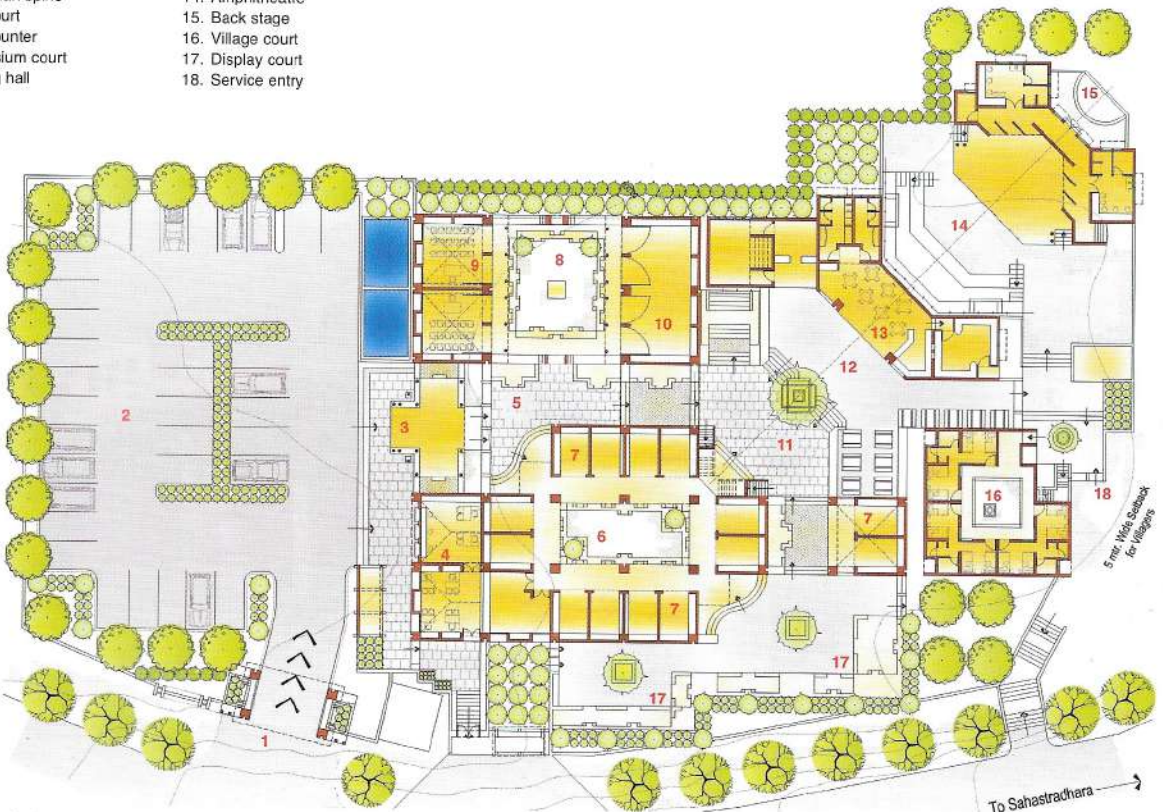




SITE PLAN



- | | |
|-------------------------------|-------------------|
| 1. Entrance gateway | 10. Museum |
| 2. Parking | 11. Central chowk |
| 3. Entrance foyer | 12. Food court |
| 4. Administration & ticketing | 13. Cafeteria |
| 5. Pedestrian spine | 14. Amphitheatre |
| 6. <i>Shilp</i> court | 15. Back stage |
| 7. <i>Shilp</i> counter | 16. Village court |
| 8. Symposium court | 17. Display court |
| 9. Training hall | 18. Service entry |



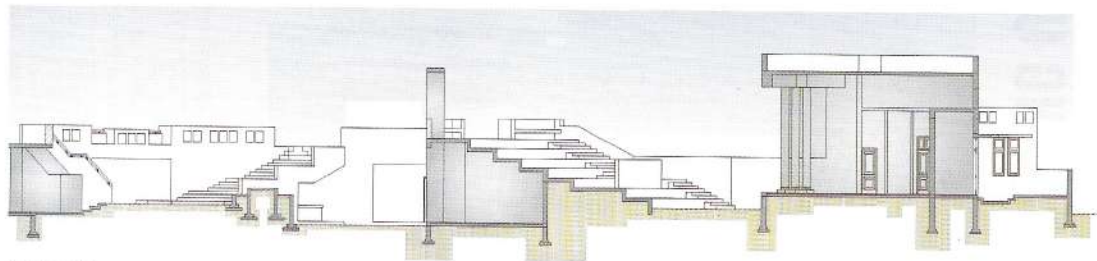
GROUND FLOOR PLAN



The *shilp* court showing the traditional 'Aipan' paintings



Training halls planned on a square grid with pyramidal roof form



SECTION



ELEVATION

The square modular roofing has a system of RCC gutters supported on hollow columns for rainwater harvesting. The sump and recharge bore is located near the entrance foyer towards which the site is naturally sloping. The complex also caters to performing arts whereby a covered stage with ancillary areas and an amphitheatre of 250 seating capacity has been designed. As a result of the flat site, the area below the seating of the amphitheatre is designed as a semi-covered cafeteria extending into the open food court.

Panels have been created on the vertical faces/walls for display of traditional 'Aipan' paintings of rural Uttarakhand fame. The complex acts as a basic 'facility' and as in any traditional settlement allows for personalisation of spaces with usage. ✚

This project was submitted for the 'Recreational Architecture Awards' category for the sixth cycle of the "a+d & Spectrum Foundation Architecture Awards 2006".

Client Rural Development Department, Govt of Uttarakhand
Design team Kapil Jain, Paridhi Agarwal and Naresh Singh
Consultants Er B S Gupta (Structures), Er H C Jain (Services)
Contractors Uttarakhand Pejjal Sansadhan Vikas Eoam Nirman Nigam
Built-up area 1500sq m
Cost of project Rs 100 lakh
Year of completion 2005